



Inner Harbour Waters Planning Policy

Planning and Placemaking Branch

FREMANTLE PORTS' INNER HARBOUR WATERS PLANNING POLICY

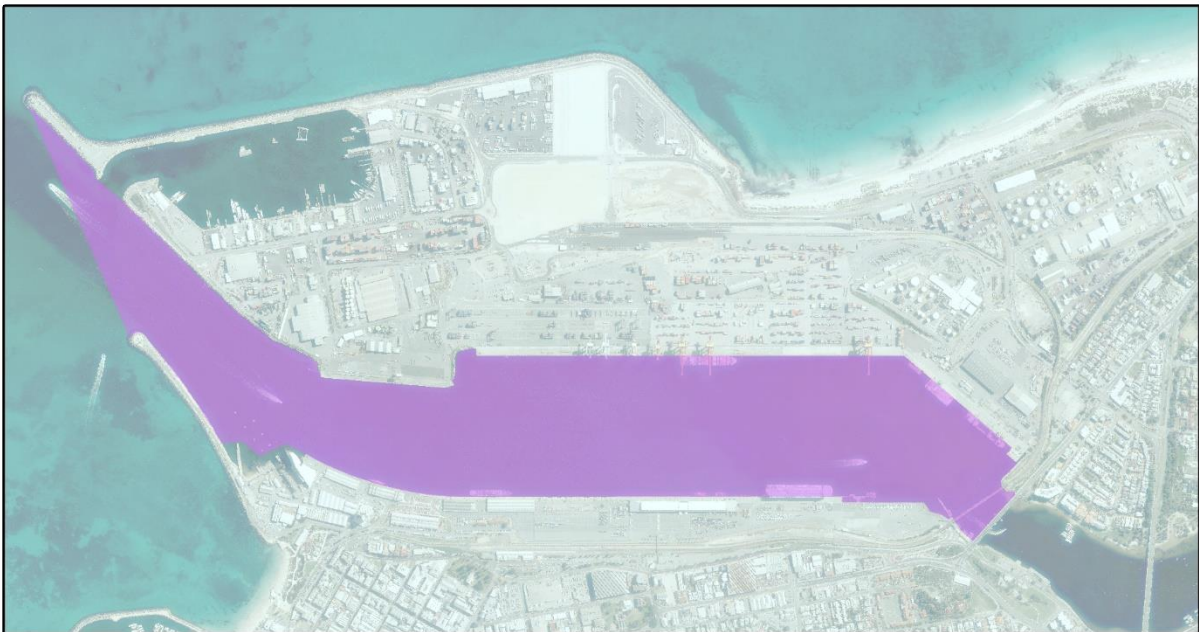
INTRODUCTION

The Inner Harbour Waters accommodate a range of port functions, all of which are critical to the State of Western Australia. The continuing use of the Inner Harbour Waters for shipping activities directly related to port functions is critical to the ongoing trade facilitation role of Fremantle Ports.

The purpose of this policy is to ensure the safe and continuing use of the Inner Harbour Waters for port functions, that port functions are recognised as a principal use of these waters, and that use by other vessels is also recognised. It is imperative that any decisions for the Inner Harbour waters policy area support the long-term sustainability of the Port of Fremantle, and that uses that would create unacceptable impacts on shipping activities, or the maritime transport network, do not occur in this area.

DESCRIPTION

This policy applies to the Inner Harbour Waters shown below.



OBJECTIVES

1. To clarify the purpose and function of the Inner Harbour Waters policy area and ensure it is communicated effectively.
2. To ensure that new uses and development integrate with and make a positive contribution to the long-term sustainability of the Port of Fremantle and its role as a dynamic and efficient working port.
3. To specify uses that are considered appropriate for the Inner Harbour Waters policy area.

4. To describe critical issues pertaining to new or additional uses within the Inner Harbour Waters policy area.
5. To ensure that any use or development represents the optimal use of the policy area, and does not restrict other uses within the policy area.
6. To ensure that all proposed uses link with the maritime transport network, and contribute to long term sustainable planning.
7. To outline administrative processes and how any variations will be dealt with.

POLICY STATEMENTS

1. Uses within the Inner Harbour Waters policy area are to recognise and maintain port functions, as described in the *Port Authorities Act 1999*, as the primary role of Fremantle Ports.
2. Uses within the Inner Harbour Waters policy area are to support the sustainability of Fremantle Ports, the effectiveness and efficiency of port operations, future trade and shipping growth.
3. Proposed activities and uses shall be excluded from the Inner Harbour Waters if they:
 - create impacts that are considered to unacceptably affect the safe and efficient movement of ships
 - generate volumes or types of marine traffic that cannot be catered for within the Inner Harbour waters
 - do not meet security standards
 - do not demonstrate compliance with safety standards.
4. Good planning is essential to the future of the Port of Fremantle. New uses, or increases in scale of existing uses, are to demonstrate:
 - integration with the maritime transport network
 - an ability to integrate with marine traffic generated by other uses
 - compatibility with other existing or planned future uses
 - that there will be no interference with the safe navigation of ships
 - that security will not be affected.
5. Significant port, industrial and related uses are located around and near the policy area. Opportunities to create synergies with these uses, for the purpose of facilitating trade will be encouraged.
6. All uses and development must pay particular attention to complying with the intent and requirements of:
 - *Inner Harbour Port Plan*
 - *Port Authorities Act 1999*
 - *Inner Harbour Buffer Definition Study*
 - *Special Event Guidelines*.

7. Prior to considering new, renewed or amended lease arrangements, the compatibility of the lease with port functions will have to be demonstrated.
8. The waters of the Inner Harbour are used, and will continue to be used, for uses unrelated to the functions of the port, such as recreational boating. However, these uses must not impede commercial shipping and should be consistent with this policy statement.
9. The western portion of the Inner Harbour Waters is listed on the Heritage Council of WA's Register of Heritage Places. Any development within this area must be referred to the Heritage Council of WA prior to any work proceeding.

APPLICATION

1. This policy is not retrospective.
2. The requirements of this policy may only be varied subject to the approval of Fremantle Ports' Board. In considering a variation, the proponent of the variation is to demonstrate:
 - grounds for variation
 - merits of the proposal
 - no negative impacts on port operations in the short and long term
 - why an alternative location, external to the port boundary is not being pursued
 - economic, social and environmental benefits of the proposal.



1 Cliff Street FREMANTLE
Western Australia 6160
Tel: +61 8 9430 3555
Email: mail@fremantleports.com.au
www.fremantleports.com.au